

上海碧珑机械有限公司
Shanghai Belon Machinery Co.,Ltd



全国专业齿轮（零件）制造的领先者之一
Leading Manufacturer Of Gears & Shafts Nationally

企业简介 Company presentation



| COMPANY OVERVIEW

Founded in 1985, our company has been focusing on gear production for more than 37 years. 37 years of participation and accumulation, has created our excellence.

 140

Company Employee

 20000 /m³

Company Area

A Well Knowledgeable and Managed Partner



Patents total **14** 项

Invention Patents 发明专利 **3** 项



150 9001:2015

Quality management system certification

IATF 16949

quality management system certification

150 14001

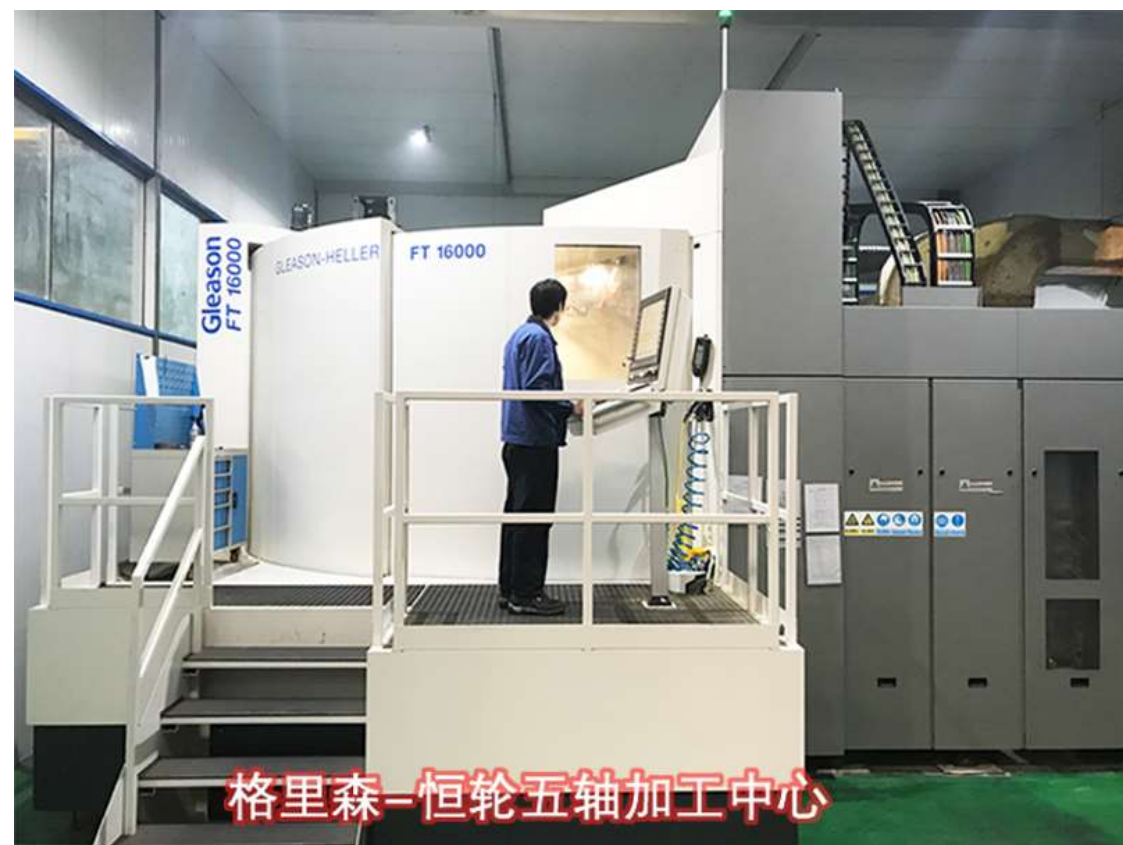
Environment system certification

We have introduced the largest size, the China first gear-specific Gleason FT16000 five-axis machining center since the cooperation between Gleason and Holler .

- Any Modules
- Any Numbers of Teeth
- Highest accuracy DIN5
- High efficiency ,high precision

Bringing the dream productivity, flexibility and economy for small batch

➤➤➤ **Five-Axis CNC machining**



格里森-恒轮五轴加工中心





Gleason 1000HC Milling



Gleason 600HC Grinding



Gleason 600HG Grinding



Gleason Phoenix 800G grinding



Gleason 600HTL Lapping



Gleason Phoenix 800G grinding



The company has introduced Gleason Phoenix 600HC and 1000HC gear milling machines, which can process Gleason shrink teeth, Klingberg and other high gears; and Phoenix 600HG gear grinding machine, 800HG gear grinding machine, 600HTL gear grinding machine, 1000GMM, 1500GMM gear The detector can do closed-loop production, improve the processing speed and quality of products, shorten the processing cycle, and achieve fast delivery

➤➤➤ Gleason and Klingberg Bevel Gears



We used Gleason-Pfauter P600/800G, P1200G, Hofler-Klingberg VIPER 500KW gear grinding machines for cylindrical gears grinding.

Diameter : $\geq 1600\text{mm}$

Module: $\leq M35$

Accuracy: $\geq \text{DIN3}$

Gleason –PFAUTRE P600/800 grinding ,Gleason-PFAUTRE P1200 grinding

➤➤➤ Cylindrical Gears



Gleason –PFAUTRE P800 Hobbing



Gleason –PFAUTRE P500S Broaching



Hofler-Klingberg VIPER 500KW gear grinding



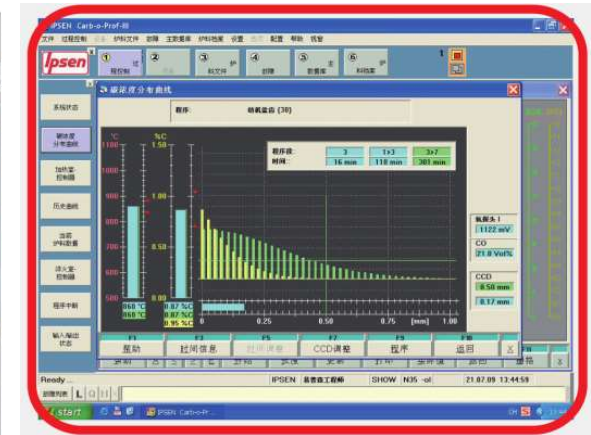
Ipsen multi-purpose furnace production line

Using international advanced atmosphere technology, heating system, process and application technology, and software system, quenching, quenching and tempering, carburizing, nitriding, and annealing can be carried out to achieve good heat treatment results and ensure the heat treatment quality of gears.



Heat Treat

The production line adopts Ipsen Carb-O-Prof process control software, real-time dynamic control of the process, flexible and diverse processes, good reproducibility, and stable and reliable product quality.



Ipsen Carb-O-Prof control software >>>

key process is the German multi-functional grinder and the Italian cylindrical grinder, which can complete the grinding of the inner hole, the outer circle and the end face, ensure the shape and position tolerance of the workpiece, and ensure that the subsequent grinding processing reaches the corresponding level.



German multi-functional grinder



Italian cylindrical grinder



ID ,OD ,Surface Grinding



Mazak



Doosan

The company introduced Mazak, Haas, Doosan, to use lathe instead of grinding after heating. The highest roughness can reach Ra0.4, which improves production efficiency.



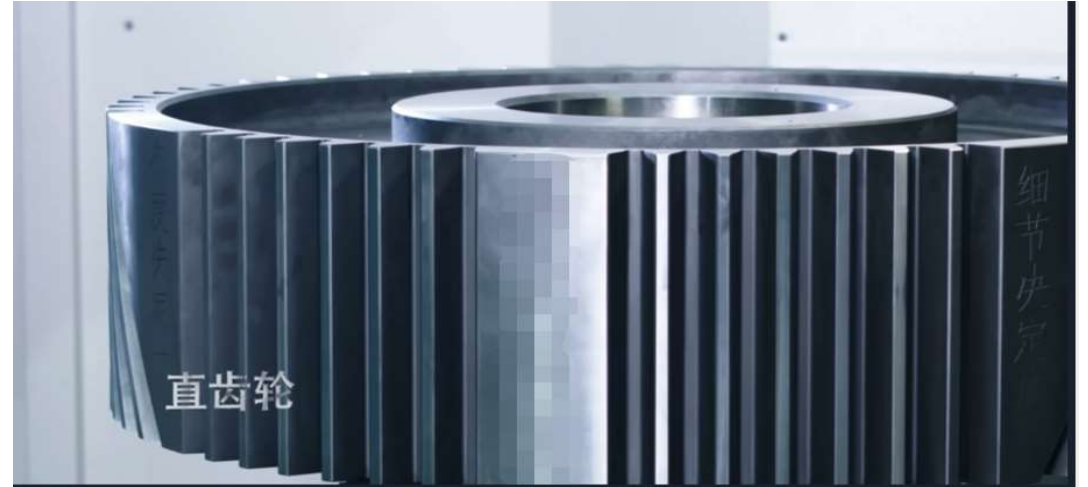
Roughness control



Haas



Hass



With rich manufacturing experience and industry-leading design and development capabilities, we can customize various non-standard special high-precision spiral bevel gears (Gleason gears, Klingberg gears) and hardened cylindrical gears according to customer needs. (Straight teeth, helical teeth, herringbone teeth without undercut grooves) and gearboxes, the module is not limited, the maximum processing diameter is 2500mm, the grinding tooth diameter is 1600mm, and the highest precision can reach DIN3 level.



M36Z49 1793mm spiral bevel gear



M20Z65 1610mm spur gear



M20Z76 1524mm spiral bevel gear



M25Z45 1210mm hrttinhbone



Straight bevel gear



Spiral bevel gear



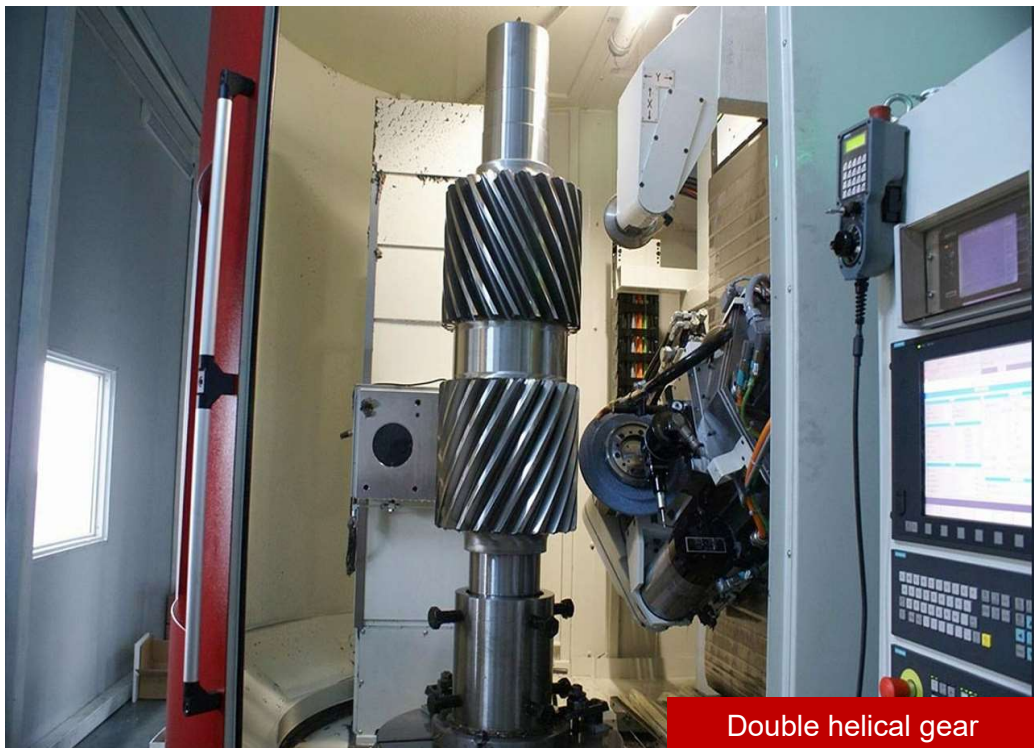
Spiral bevel gear shaft



Double helical gear



Helical Internal Gear



Double helical gear



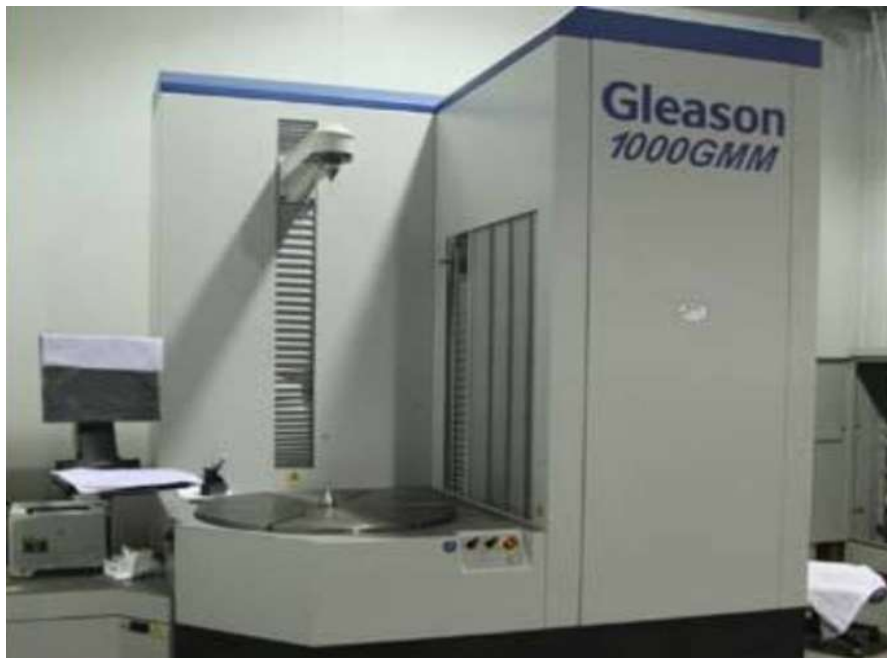
Spur Internal Gear





- Constant temperature testing room
- Heat treatment laboratory
- Gleason 1000GMM gear detector
- Gleason 1500GMM gear detector
- Accuracy testing
- Tooth profile checking
- Chemical composition check
- Mechanical properties check
- Dimensions check

➤➤➤ **Inspection**





上海碧珑机械有限公司
Shanghai Belon Machinery Co.,Ltd

 Lolita@belongear.com

 www.belongear.com

 <https://www.linkedin.com/company/belongear-manufacture>

 <https://www.youtube.com/c/ShanghaiBelonMachineryColtd>

 <https://www.facebook.com/belongear/>

 <https://twitter.com/belongear>



Address

Bajie Factory, 2nd Floor, Building C3,
Internet Baodi, No.221, HuangXing Road,
Yangpu District, Shanghai, China



E-mail

lolita@belongear.com
jun.z@belongear.com



Phone

86-18721953851



Hours

Monday-Friday: 9am to 6pm
Saturday, Sunday: Closed